



Manufacture,
Import & Export of
**Retread Rubber
and Rubber
Chemicals**





Grow with TYRIA RUBBER ...

ABOUT OUR COMPANY >>

Tyria Rubber Company manufactures tire retreading materials, repair patches, and refurbished tyres, providing durable and cost-effective alternatives to new tyres. Our pre-cured tread rubber, cushion gum, and bonding agents ensure maximum durability, fuel efficiency, and top performance across industries. Each refurbished tyre undergoes strict quality checks for high mileage and safety, helping businesses save up to 70% while reducing waste.



Our tyre repair patches and bonding agents offer seamless, long-lasting restorations. We serve industries like transportation, logistics, construction, mining, and agriculture, delivering high-performance, eco-friendly tyre solutions that meet industry standards. Choose smarter, cost-effective, and sustainable tire solutions with Tyria Rubber Company!

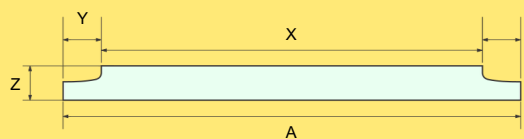


OUR PRODUCTS >>



⦿ Conventional Hot Rubber >>

Our hot compound is enriched with sufficient antioxidants so it will enhance more durability than other brands. Specially designed compound for extra shelf life and high mileage available in different grades to suit different applications. Available in customer specified sizes (such a Truck, Tractor & O.T.R.).



eg.	100x150x26	110x160x28	125x175x30	140x180x32	190x240x50
X	100	110	125	140	190
Y	25	25	25	20	25
Z	26	28	30	32	50
A	150	160	175	180	240

***And also avail in customer's specification**

⦿ Pre-cured Tread Rubber & O.T.R. Rubber >>

Made out of high quality raw material like synthetic rubber & natural rubber. Available in widest range of designs and size of small to huge tyre. Admired by worldwide and run through all road condition. Used for Cold Process, Suitable for all types and sizes of tyres in various designs.



⦿ We have two categories available >>

NORMAL

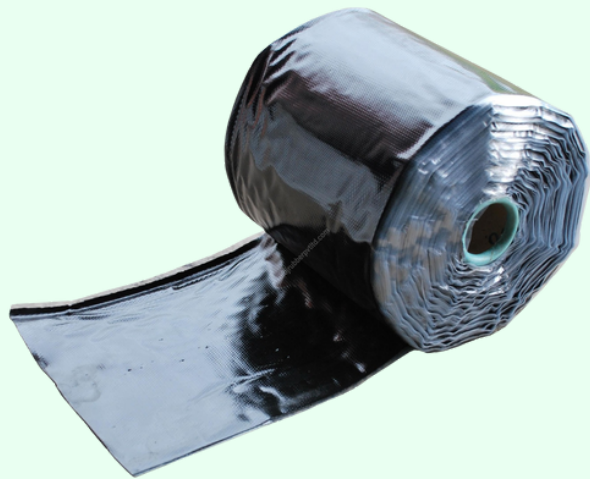


PREMIUM



⦿ Under Tread Stripe (U.T.S.) >>

UTS means UNDER TREAD STRIPE, It can be used to repair side wall of tyre casing and fill the ruffed surface of tyre casing.



⦿ Black Vulcanising Solution (U.T.S.) >>

Our vulcanising solution is high quality vulcanising solution and available in 25 liters tin to handle easily and compatible with both hot & cold rubber process. Our vulcanising solution has standard gum property which can help to applied directly on the buffed area of belt without adding any solvents. Due to air tight tin packing, even the last drop of solution can be utilised for retreading process.



⦿ Bonding Gum >>

Our Bonding gum highly tackifying and made from 100% natural rubber to increase tack. Easily available in 5 kg. Roll as a box packing of 20 Kg. It can be used to fill nail holes and repair injured tyre casing.



⊗ Tyre Repair Patch >>

Our premium tyre repair patches are designed to deliver strong, reliable, and long-lasting repairs for both radial and nylon tyres. Available in a wide range of sizes, our patches provide a perfect solution for various types of tyre damage, ensuring extended tyre life and enhanced performance.

Manufactured using advanced compounds and reinforced materials, our patches offer superior flexibility, heat resistance, and strong adhesion, making them suitable for demanding road and off-road conditions. Each patch undergoes strict quality control to ensure consistent performance, helping to reduce downtime and increase operational efficiency.

Our tyre repair patches are trusted by industry professionals for their durability, easy application, and ability to restore tyre integrity under high-stress environments.



⊗ Refurbished Tyre >>

At our company, refurbished tyres are a key offering, crafted with innovation, sustainability, and excellence. Using advanced restoration techniques, we enhance tyre durability, reduce waste, and uphold environmental responsibility.

We provide a wide range of tyres, from small to large, ensuring the best quality and price to meet diverse industry needs.

Our goal is to build a strong nationwide presence in the tyre restoration sector, collaborating with industry leaders to set new benchmarks. By delivering cost-effective and eco-friendly solutions, we help businesses achieve optimal performance while contributing to a greener, more sustainable future.



⊗ Retread Compounds >>

We manufacture retread compounds for businesses producing pre-cured tread rubber, cushion gum, and bonding gum. Our compounds are formulated to provide superior durability, excellent bonding, and high wear resistance, ensuring top-quality retread materials.

Our Range of Retread Compounds:

We offer different quality grades of retread compounds to suit various performance and cost requirements. Whether for high-mileage applications or cost-effective solutions, our compounds are designed to meet industry needs.

Key Features:

- ✓ High-strength formulation for long-lasting retreads
- ✓ Excellent adhesion and flexibility for superior bonding
- ✓ Optimized for durability, heat resistance, and mileage
- ✓ Suitable for all types of commercial and off-road tire applications
- ✓ Custom formulations available to meet specific requirements

Our retread compounds are tested for quality and consistency, making them a trusted choice for manufacturers producing premium retread materials.



⊗ Rubber Chemicals >>

We provide a comprehensive range of high-quality rubber chemicals, catering to the diverse needs of the rubber industry. Our extensive inventory includes essential materials used in manufacturing retread rubber and other rubber products, ensuring consistent quality and reliable performance. From processing aids to vulcanizing agents, we offer almost all key rubber chemicals required for superior product performance and durability. Our products are sourced from trusted suppliers and tested for industry standards, guaranteeing optimal results for various applications.



INNOVATIVE DESIGNS MADE FOR ALL ROADS



⦿ Testing Lab

Tyria Rubber believes in achieving excellence through continuous improvement in our Products, Process & Systems. We are committed to provide Quality Products on time, Ensure to satisfy customer's need and expectation.

For that each sample is analysed at our laboratory for Perfection, Standard and Accuracy.



23.5 X 25 06



18.00 X 25 06



17.5 X 25 06



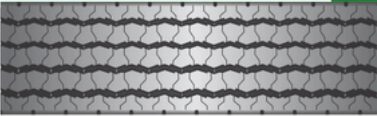
14.00 X 25 06



ZDY 07



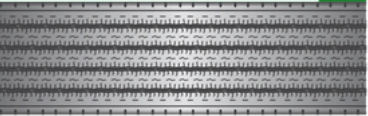
M9 07



FB 07



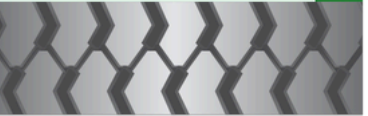
ZM 07



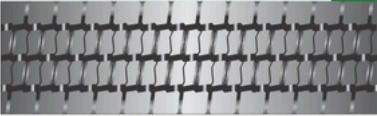
MST 07



SMS 08



BS 08



LD 08



ML 08



RS 08



AJAX 09



JT 09



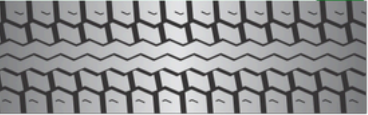
SM 09



TS 09



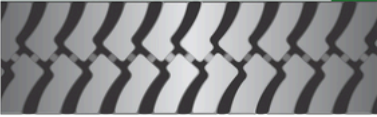
KH 10



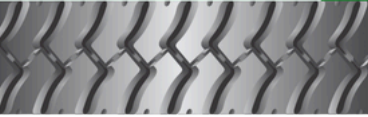
MAX 10



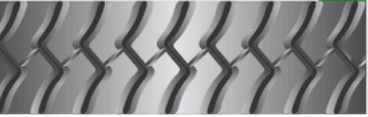
EX 10



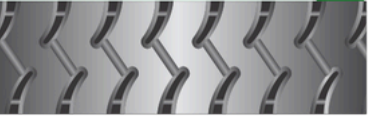
MK 10



MS 10



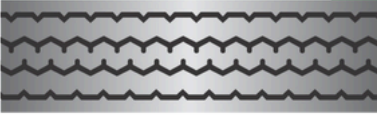
MZ 10



SL 11



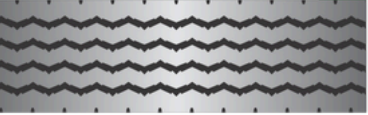
VK 11



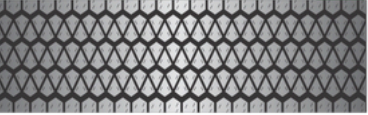
CL 11



FT 11



HTR 11



GD 11



ZIGMA 12



TF 12



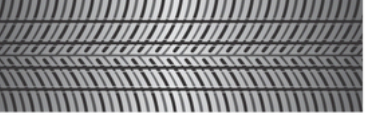
TF 12



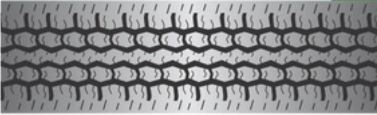
MG 12



MR 12



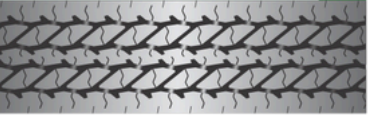
RM 12



SRM 13



TDR 13



PR 13



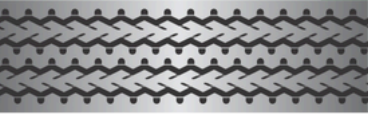
ASTRO 13



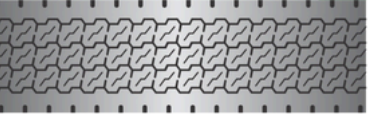
ROVER 13



SK 13



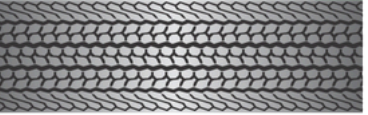
BRYR 14



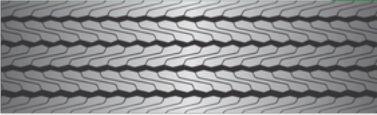
MOJAX 14



MXL / MXM 14

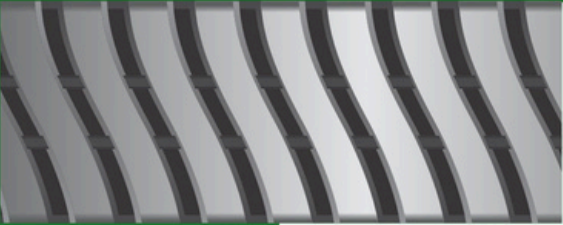



ME 14





AT 14



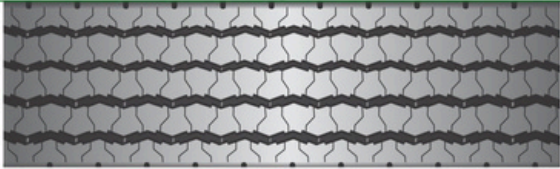
		TYRE SIZE	WIDTH	LENGTH	THICK NESS	BASE	NSD	WEIGHT
		DESCRIPTION	MM	INCHES	MM	MM	MM	APPROX KG
 <div>23.5 X 25</div>	23.5 X 25	23.5*25	530	192	45	9	36	96.500 TO 97.500


 <div>18.00 X 25</div>	18.00 X 25	18.00*25 (Heavy)	435	191	64 / 65	9 / 10	55 / 55	115.500 TO 116.500
		18.00*25	435	190	54	8	46	98.000 TO 99.000
		18.00*25 (Lower)	435	190	49	6	43	87.000 TO 88.000

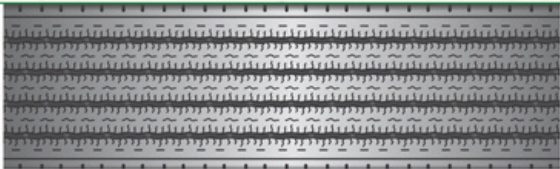
 <div>17.5 X 25</div>	17.5 X 25	17.5*25	390	159	34.5	6.5	28	45.500 TO 46.500


 <div>14.00 X 25</div>	14.00 X 25	14.00*25	325	166	37	9	28	44.500 TO 45.500
		14.00*25 (Lower)	325	166	33	7	26	38.500 TO 39.500

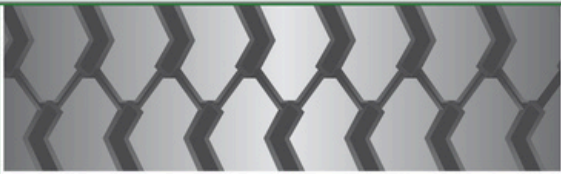
		TYRE SIZE	WIDTH	LENGTH	THICK NESS	BASE	NSD	WEIGHT
		DESCRIPTION	MM	INCHES	MM	MM	MM	APPROX KG
 ZDY	ZDY	EXPORT	250	147	16.25	3.5	12.75	14.900 TO 15.100
		12.00R*24	250	130	16.25	3.5	12.75	13.200 TO 13.400
		EXPORT	230	147	19.5	4	15.5	15.900 TO 16.100
		11.00R*20	230	130	19.5	4	15.5	14.100 TO 14.300
		10.00*20	230	128	19.5	4	15.5	13.900 TO 14.100

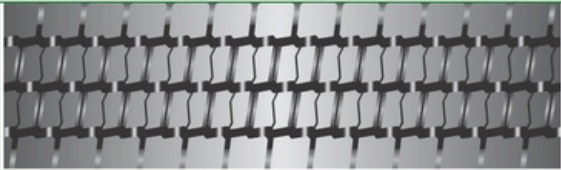
 M9	M9	EXPORT	240	147	18.5	3.5	15	16.200 TO 16.400
		12.00R*20	240	130	18.5	3.5	15	14.300 TO 14.500
		10.00*20,11.00*20	220	128	19	3.6	15.4	13.100 TO 13.300
		10.00*20,11.00*20 (Lower)	220	130	15	4.5	10.5	11.200 TO 11.400
		10.00*20	210	128	15	4.5	10.5	10.100 TO 10.300
		6.70*15 / 6.50*20 / 7.00R*15	138	93	12.25	4	8.25	3.800 TO 4.000

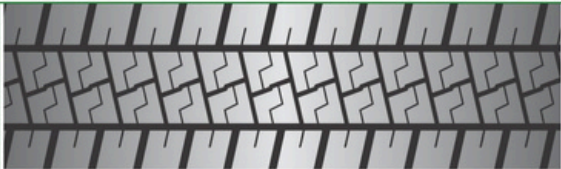
 FB	FB	10.00*20	215	131	21	4.5	16.5	14.100 TO 14.300

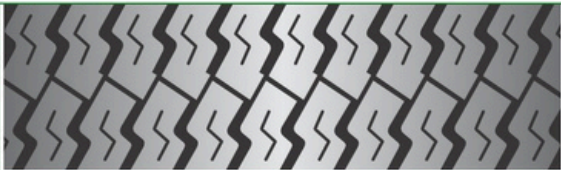
 ZM	ZM	10.00*20	220	128	18.5	3.8	14.7	13.000 TO 13.200
		10.00*20	210	128	14.75	4.5	10.25	10.200 TO 10.400


 MST	MST	12.00*20	240	135	18.2	3.4	14.8	14.500 TO 14.700
		12.00*20	230	132	18.4	3.4	15	12.900 TO 13.100
		12.00*20	220	129	18.25	3.5	14.75	12.200 TO 12.400
		10.00*20	210	128	19.5	3.5	16	11.700 TO 11.900
		10.00*20	205	129	18.2	3.6	14.6	10.500 TO 10.700

		TYRE SIZE	WIDTH	LENGTH	THICKNESS	BASE	NSD	WEIGHT
		DESCRIPTION	MM	INCHES	MM	MM	MM	APPROX KG
 SMS SUPER MINES		12.00*20	240	135	20.2	4.4	15.8	14.500 TO 14.700
		11.00*20	220	132	19	4	15	12.900 TO 13.100
		10.00*20	210	128	19	4	15	11.800 TO 12.000

 BS BLACK STONE		10.00*20	220	128	18.3	3.9	14.4	12.400 TO 12.600
		10.00*20 (Lower)	220	128.5	16.25	5	11.25	11.200 TO 11.400
		10.00*20	210	128	14	4	10	10.900 TO 11.100

 LD LD		11.00*20	230	134	16.5	3.6	12.9	11.900 TO 12.100
		10.00*20	220	129	18.5	3.9	14.6	11.900 TO 12.100
		10.00*20	215	129	17	3.9	13.1	11.200 TO 11.400
		10.00*20	210	129	16.3	3.4	12.9	11.200 TO 11.400
		9.00*20/10.00*20	205	128	16.8	3.7	13.1	9.900 TO 10.100


 ML MOJLUG		10.00*20	220	128	19.5	4	15.5	13.100 TO 13.300
		10.00*20	210	127	18	3.5	14.5	11.200 TO 11.400
		8.25*20	172	118	14	4	10	7.400 TO 7.600
		8.25*16	172	101	14	4	10	6.300 TO 6.500

 RS ROAD STAR		12.00*20/24	220	138	18.5	4	14.5	13.700 TO 13.900
		10.00*20	205	127	17.5	3.5	14	10.300 TO 10.500
		10.00*20	195	125	18	3	15	10.200 TO 10.400


		TYRE SIZE	WIDTH	LENGTH	THICKNESS	BASE	NSD	WEIGHT
		DESCRIPTION	MM	INCHES	MM	MM	MM	APPROX KG
 AJAX	AJAX	10.00*20 (Heavy)	205	127	16.5	3.5	13	11.400 TO 11.600
		10.00*20 (Lower)	205	127	16	3.5	12.5	10.300 TO 10.500
		10.00*20	200	127	16	3.9	12.1	10.000 TO 10.200
		9.00*20	187	124	16.5	4	12.5	9.700 TO 9.900
		9.00*20 (Lower)	186	124	14.5	4	10.5	8.300 TO 8.500
		8.25*20	168	119	14	3	11	7.400 TO 7.600
		8.25*16	168	102	14	3	11	6.300 TO 6.500
		7.50*16	158	99	15.5	3.9	11.6	5.800 TO 6.000
		7.50*16	156	99.5	13.2	4	9.2	5.100 TO 5.300
		7.50*16	150	97	15	3.5	11.5	5.300 TO 5.500
		7.00*15	150	94	15	3.5	11.5	5.000 TO 5.200
		6.70*15, 6.50*20, CAR	140	93.5	14.5	3	11.5	5.000 TO 5.200
		6.00*16, 6.70*15	130	88	15	4.25	10.75	4.300 TO 4.500
		6.00*16	122	90	15	4	11	3.800 TO 4.000
		MINI DOR	102	59	12	4	8	1.800 TO 2.000
		MINI DOR	101	59	11	3.5	7.5	1.500 TO 1.700


 JT	JET TRACK	10.00*20 (Heavy)	205	127	17.15	3.4	13.75	11.300 TO 11.500
		10.00*20 (Medium)	205	127	15.5	3.4	12.1	10.400 TO 10.600
		10.00*20 (Lower)	205	127	16.5	4	12.5	10.000 TO 10.200
		10.00*20	195	126	17.5	4.5	13	9.900 TO 10.100
		9.00*20	190	123	16.6	3.5	13.1	9.900 TO 10.100
		9.00*16	190	108	16.6	3.5	13.1	8.700 TO 8.900
		9.00*20	187	124	14.5	3	11.5	8.700 TO 8.900
		9.00*16	187	108	14.5	3	11.5	7.600 TO 7.800
		8.25*20	170	118	16	3.5	12.5	7.900 TO 8.100
		8.25*16	170	100	16	3.5	12.5	6.600 TO 6.800
		7.50*16	156	97	17	3.7	13.3	6.200 TO 6.400
		7.50*16	150	97	15	3.5	11.5	5.000 TO 5.200
		6.00*16, TATA ACE	120	66	14.25	4	10.25	2.800 TO 3.000

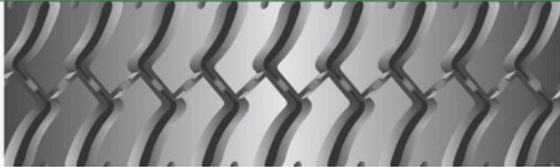
 SM	SUPER MOJ	10.00*20	205	128	14.75	4.25	10.5	10.400 TO 10.600
		8.25*20	170	118	14.2	3.2	11	7.500 TO 7.700
		8.25*16	170	104	14.2	3.2	11	6.500 TO 6.700
		7.50*16	160	99	13	3.3	9.7	5.300 TO 5.500
		7.00*15	150	97	13.3	3.5	9.8	4.800 TO 5.000

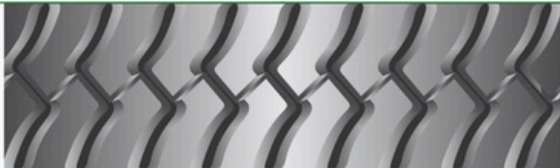
 TS	TRUCK STAR	10.00*20	220	128	19	3.5	15.5	13.000 TO 13.300
		10.00*20	215	127	18.5	4	14.5	12.000 TO 12.200
		10.00*20	205	127	16.5	3.5	13	10.000 TO 10.200


		TYRE SIZE	WIDTH	LENGTH	THICK NESS	BASE	NSD	WEIGHT
		DESCRIPTION	MM	INCHES	MM	MM	MM	APPROX KG
 KH	KH	10.00*20	210	127	17.5	3.5	14	10.800 TO 11.000


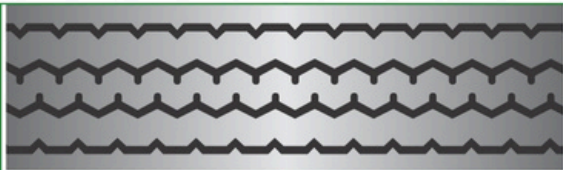

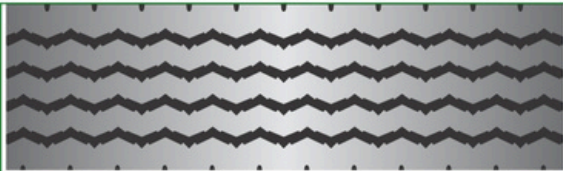
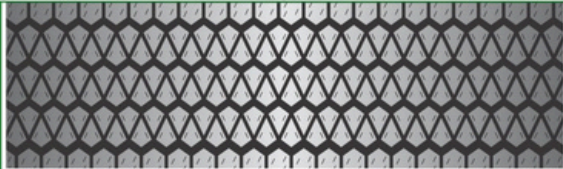
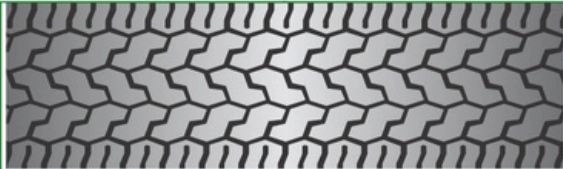
 MAX	MAXIMA	10.00*20	210	128	17.2	5	12.2	11.000 TO 11.200
		10.00*20	205	127	17.2	4	13.2	10.300 TO 10.500

 EX	EXTREME	10.00*20 (Heavy)	205	127	18.7	4	14.7	11.200 TO 11.400
		10.00*20 (Lower)	205	127	18	4	14	10.200 TO 10.400


 MK	MOJ KING	10.00*20	210	127	18.7	3.4	15.3	11.500 TO 11.700


 MS	MINES STONE	10.00*20	205	127	17	3.7	13.3	10.800 TO 11.000
		10.00*20 (Lower)	205	127	16	4	12	9.800 TO 10.000
		9.00*20	187	124	17.7	3.5	14.2	9.300 TO 9.500
		9.00*16	187	108	17.7	3.5	14.2	8.100 TO 8.300
		8.25*20	170	118	17.3	4	13.3	8.200 TO 8.400
		8.25*16	170	100	17.3	4	13.3	7.000 TO 7.200

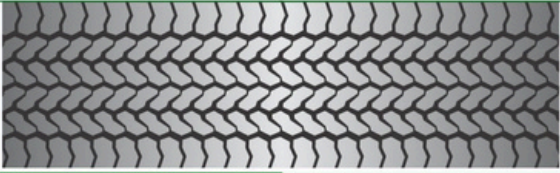
 MZ	MZ	10.00*20	205	127	23.5	5	18	14.300 TO 14.500

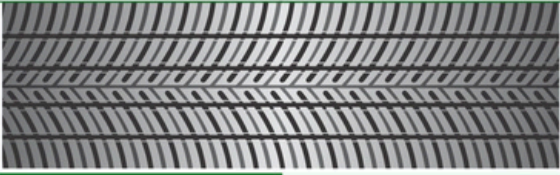
		TYRE SIZE	WIDTH	LENGTH	THICKNESS	BASE	NSD	WEIGHT
		DESCRIPTION	MM	INCHES	MM	MM	MM	APPROX KG
 SL SEMI LUG		10.00*20	207	127	17	4	13	11.200 TO 11.400
		10.00*20	205	127	15.5	3.5	12	10.200 TO 10.400
		9.00*20	190	123	16.7	3.7	13	9.500 TO 9.700
		7.50*16	158	98	16.5	4.1	12.4	5.900 TO 6.100
		6.00*16, 6.70*15	132	88	16	4.3	11.7	4.400 TO 4.600
		6.00*16	124	87	16	4.2	11.8	4.100 TO 4.300
 VK VIKING		10.00*20	205	128	15.1	3.4	11.7	10.300 TO 10.500
		9.00*20	187	124	16	3	13	9.200 TO 9.400
		7.50*16, 7.8*15	156	97	15.6	3.7	11.9	6.000 TO 6.200
		7.50*16, 7.00*15	150	97	13.7	3.5	10.2	5.000 TO 5.200
		6.70*15, 6.50*20	140	93	15	3.75	11.25	4.700 TO 4.900
 CL CROSS LUG		10.00*20	205	127	16	3.2	12.8	10.300 TO 10.500
		7.50*16	160	97	14.2	3.5	10.7	5.300 TO 5.500
 FT FAST TRACK		10.00*20	205	127	15	3.5	11.5	10.000 TO 10.200
		8.25*20	168	119	14	3.5	10.5	6.800 TO 7.000
		8.25*16	168	102	14	3.5	10.5	5.900 TO 6.100
 HTR HTR		192 / 215R15	174	87	14.5	3.5	11	4.300 TO 4.500
 GD GLIDER		192 / 215R15	173	87	12	3.6	8.4	4.100 TO 4.300

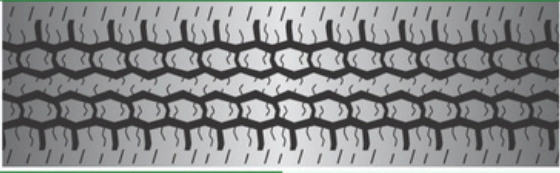
		TYRE SIZE	WIDTH	LENGTH	THICKNESS	BASE	NSD	WEIGHT
		DESCRIPTION	MM	INCHES	MM	MM	MM	APPROX KG
 ZIGMA	ZIGMA	192 / 215R15	173	87	15	4	9	5.100 TO 5.300

 TF	TRACTOR FRONT	7.50*16	158	94	18	4	14	5.500 TO 5.700
		6.00*16	132	90	21.5	4.5	17	4.600 TO 4.800
		TRACTOR FRONT	127	90	17	4.5	12.5	3.600 TO 3.800

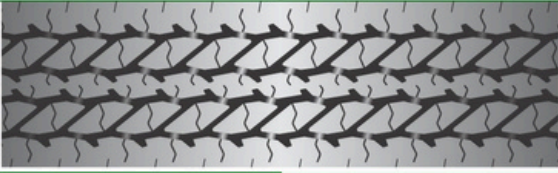
 TF	TRACTOR FRONT	7.50*16	160	96	20	3.5	16.5	6.000 TO 6.200
		6.00*16, 6.50*20	140	105	22	4	18	6.000 TO 6.200
		TRACTOR FRONT	128	91	17	3	14	4.000 TO 4.200
		MINI TRACTOR	100	76	13	3.5	9.5	2.000 TO 2.200

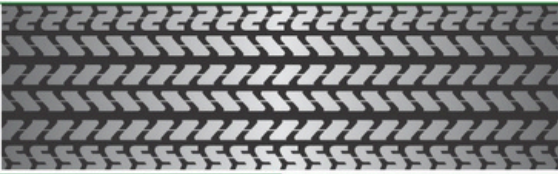
 MG	MOJ GRIP	7.00R*15, 6.70*15	142	91	12.3	3.3	9	3.300 TO 3.500

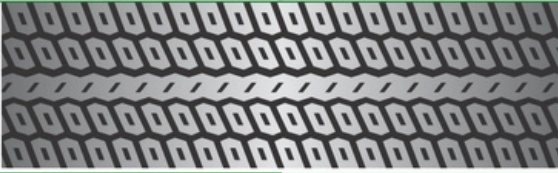
 MR	MOJ RADIAL	6.70*15, CAR	140	90	14	3	11	3.700 TO 3.900


 RM	RADIAL MASTER	7.00R*15	142	92	14	3.5	10.5	4.300 TO 4.500

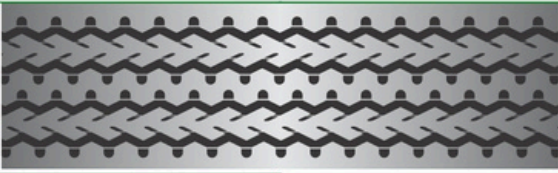
		TYRE SIZE	WIDTH	LENGTH	THICK NESS	BASE	NSD	WEIGHT
		DESCRIPTION	MM	INCHES	MM	MM	MM	APPROX KG
 SRM	SRM	7.00R*15	140	91	12.7	3	9.7	4.200 TO 4.400

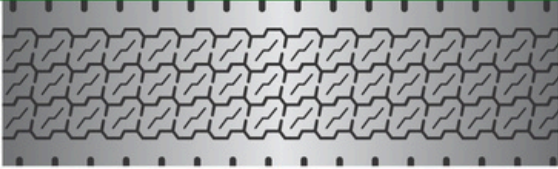
 TDR	TDR	7.00R*15	145	92	14	4	10	4.300 TO 4.500


 PR	POWER RADIAL	78*15	155	84	13.25	3.75	9.5	3.600 TO 3.800

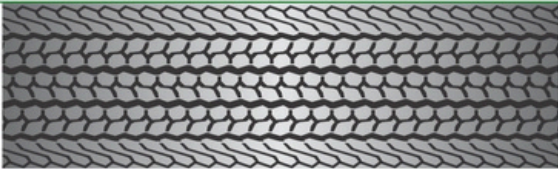
 ASTRO	ASTRO	7.50*16, 78*15	156	88	15.4	3.7	11.7	5.000 TO 5.200

 ROVER	ROVER	6.00*16, 6.70*15	132	90	14.5	3	11.5	4.000 TO 4.200
		6.00*16	123	90	14.5	3.5	11	3.600 TO 3.800

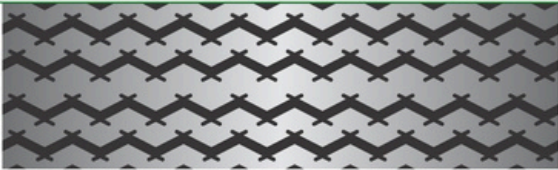
 SK	SPEED KING	6.00*16, 6.70*15	133	91	14.5	3.4	11.1	4.000 TO 4.200

		TYRE SIZE	WIDTH	LENGTH	THICKNESS	BASE	NSD	WEIGHT
		DESCRIPTION	MM	INCHES	MM	MM	MM	APPROX KG
 BRYR	BRYR	6.00*16	119	89	13.2	3.2	10	3.200 TO 3.400
		TATA ACE, CAR SIZE	119	66	13.2	3.2	10	2.300 TO 2.500

 MOJAX	MOJAX	6.00*16	117	89	12.5	3.25	9.25	3.300 TO 3.500
		AMBASSADOR, CAR SIZE	117	66	12.5	3.25	9.25	2.300 TO 2.500
		5.20*14, AMBASSADOR, CAR SIZE	105	78	10	2.75	7.25	2.100 TO 2.300
		5.20*14, 4.50*12, 5.65*12	95	68	10	2.75	7.25	1.600 TO 1.800

 MXL/MXM	MAXIMUS	6.00*16 (MXL)	115	87	12	3	9	2.900 TO 3.100
		AMBASSADOR, CAR SIZE	115	82	12	3	9	2.700 TO 2.900
		AMBASSADOR, CAR SIZE	110	82	12	2.75	9.25	2.600 TO 2.800

 ME	MILLENNIUM	5.20*14, AMBASSADOR, CAR SIZE	105	77	11	2.5	8.5	2.200 TO 2.400
		5.20*14, 4.50*12, 5.65*12	100	76	10.5	2	8.5	1.800 TO 2.000
		5.20*14, 4.50*12, 5.65*12	95	67	11.25	2	9.25	1.700 TO 1.900
		5.20*14, 4.50*12, 5.65*12	90	67	10	2	8	1.400 TO 1.600

 AT	AUTO	RICKSHAW	85	50	10.5	2.2	8.3	1.100 TO 1.200



TYRIA RUBBER

Manufacture, Import & Export of
Retread Rubber and Rubber
Chemicals



tyriarubber@gmail.com



+91 9423238237



Surya Revenue, survey no 71/2, shed No - 2,
Balaji Industries, Kuvadva Wankankar Road,
Surya Rampara Rajkot-Gujarat (360003).

TYRIA
RUBBER